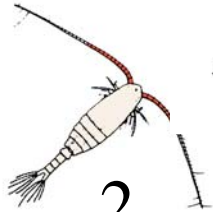


# Identification of Common Marine Plankton

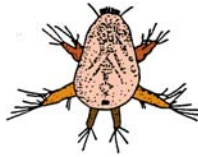
## Key



1.



2.



3.



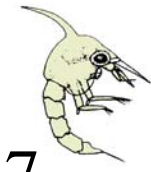
4.



5.



6.



7.



8.



9.

1. Amphipod

2. Copepod

3. Nauplii

4. Comb jelly

5. Brittle star Larva

6. Gastropod Larva

7. Zoea larva of crab

8. Megalops larva of crab

9. Exoskeleton of Barnacle molt

10. Ostracod

11. Small jellyfish

12. Tintinnid

13. Fish Larva

14. Diatoms

15. Dinoflagellates

16. Cladoceran & cladoceran larva

16. Cladoceran & cladoceran larva

Note: Drawings are not to scale



13.



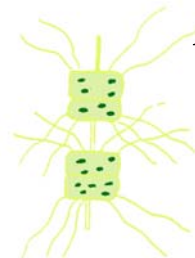
14a.



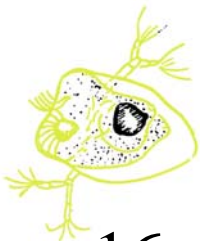
15a.



b.



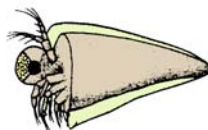
b.



16a.



b.



c.